

Description

Silicon PNP transistor in a SOT-23 Plastic Package

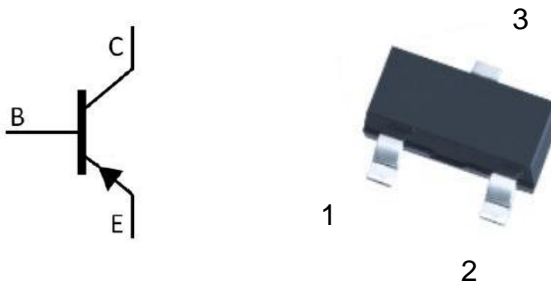
Applications

General amplifier applications

Features

- Excellent h_{FE} linearity
- Complementary pair with CT2SC2412M
- Halogen-free Product

Symbol	Parameter	Max	Unit
V_{CE0}	collector-emitter voltage	-50	V
I_c	collector current (DC)	-150	mA

Equivalent Circuit & Pinning


PIN1: Base

PIN 2: Emitter

PIN 3: Collector

 h_{FE} Classifications & Marking

h_{FE} Classifications Symbol	Q	R	S
h_{FE} Range	120~270	180~390	270~560
Marking	HFQ	HFR	HFS

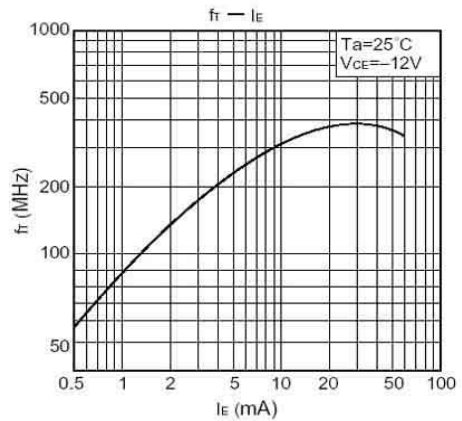
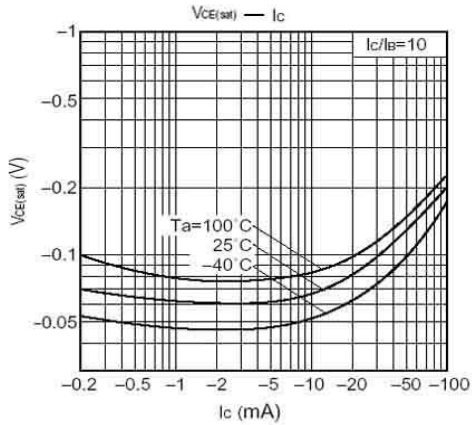
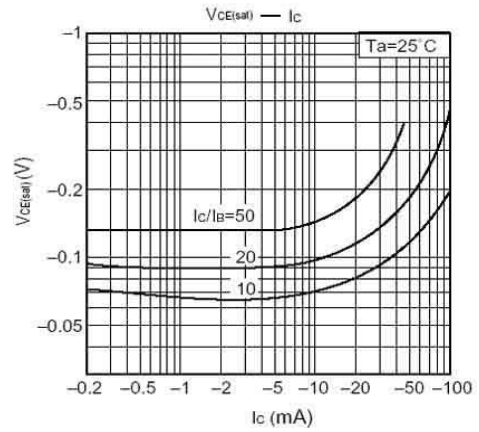
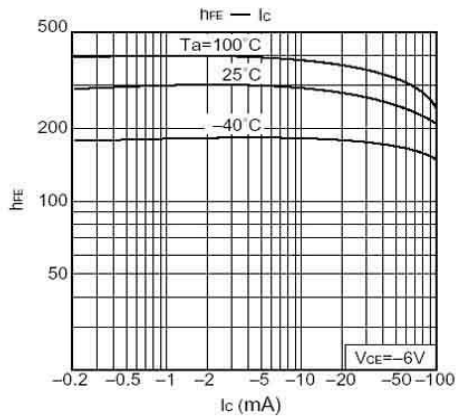
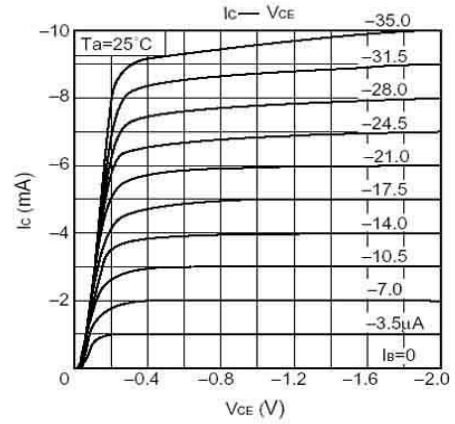
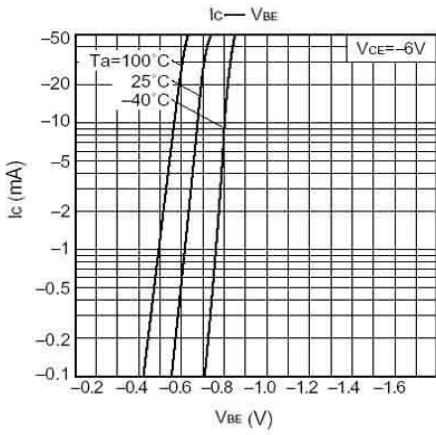
Absolute Maximum Ratings(Ta=25°C)

Parameter	Symbol	Rating	Unit
Collector to Base Voltage	V_{CBO}	-60	V
Collector to Emitter Voltage	V_{CEO}	-50	V
Emitter to Base Voltage	V_{EBO}	-6.0	V
Collector Current	I_C	-150	mA
Collector Power Dissipation	P_C	200	mW
Junction Temperature	T_j	150	°C
Storage Temperature Range	T_{stg}	-55~150	°C

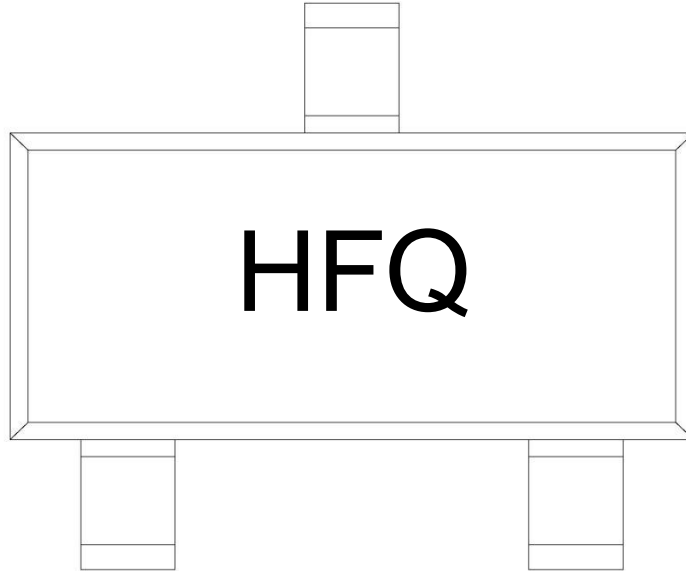
Electrical Characteristics(Ta=25°C)

Parameter	Symbol	Test Conditions	Min	Typ	Max	Unit
Collector-Base Breakdown Voltage	V_{CBO}	$I_C=-50\mu A$	-60			V
Collector-Emitter Breakdown Voltage	V_{CEO}	$I_C=-1.0mA$	-50			V
Emitter-Base Breakdown Voltage	V_{EBO}	$I_E=-50\mu A$	-6.0			V
Collector Cut-Off Current	I_{CBO}	$V_{CB}=-60V$			-0.1	μA
Emitter Base Cut-Off Current	I_{EBO}	$V_{EB}=-6.0V$			-0.1	μA
DC Current Gain	h_{FE}	$V_{CE}=-6.0V$ $I_C=-1.0mA$	120		560	
Collector to Emitter Saturation Voltage	$V_{CE(sat)}$	$I_C=-50mA$ $I_B=-5.0mA$			-0.5	V
Transition Frequency	f_T	$V_{CE}=-12.0V$ $I_E=2.0mA$ $f=30MHz$		140		MHz
Collector output capacitance	C_{ob}	$V_{CB}=-12V$ $I_E=0$ $f=1.0MHz$		3.5		pf

Electrical Characteristic Curve



Marking Instructions



Note:

- H: Company Code
- F: Product Type Code
- Q: h_{FE} Classifications Symbol Code

h_{FE} Classifications Symbol	Q	R	S
h_{FE} Range	120~270	180~390	270~560
Marking	HFQ	HFR	HFS

Packaging SPEC.

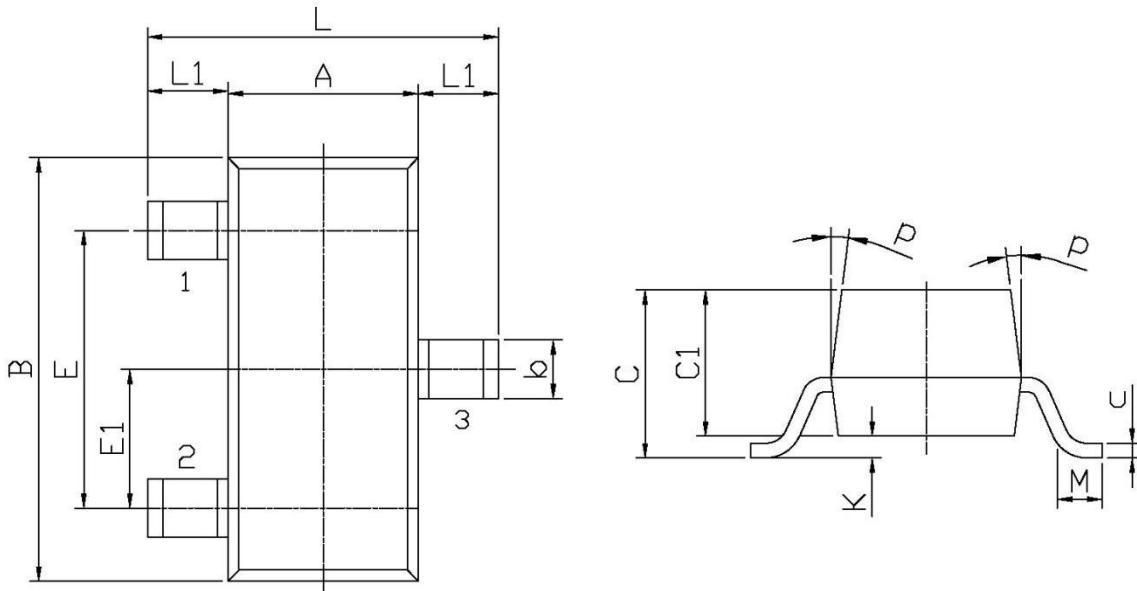
REEL INFORMATION

Package Type	Units					Dimension (unit: mm ³)		
	Units/Reel	Reels/Inner Box	Units/Inner Box	Inner Boxes/Outer Box	Units/Outer Box	Reel	Inner Box	Outer Box
SOT-23	3,000	10	30,000	6	180,000	7" x8	180×120×180	390×385×205

Package Outline Dimensions

SOT-23

单位: mm



Symbol	Dimensions In Millimeters		Symbol	Dimensions In Millimeters	
	Min	Max		Min	Max
L	2.2	2.7	C	1.30Max	
L1	0.45	0.65	C1	0.90	1.20
A	1.15	1.50	c	0.05	0.20
B	2.70	3.10	K	0	0.10
E	1.70	2.10	M	0.20MIN	
E1	0.85	1.05	P	7°	
b	0.35	0.55			