

Description

- Silicon NPN transistor in a TO-220 Plastic Package

Features

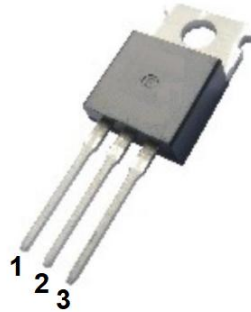
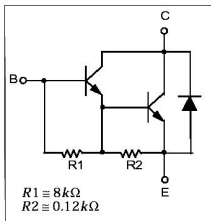
- Complement to TIP127.

Applications

- Medium power linear switching applications.

Symbol	Parameter	Max	Unit
V_{CE0}	collector-emitter voltage	100	V
I_c	collector current (DC)	5.0	A

Equivalent Circuit & Pinning



PIN1: Base PIN 2: Collector PIN 3: Emitter

hFE Classifications & Marking

See Marking Instructions.

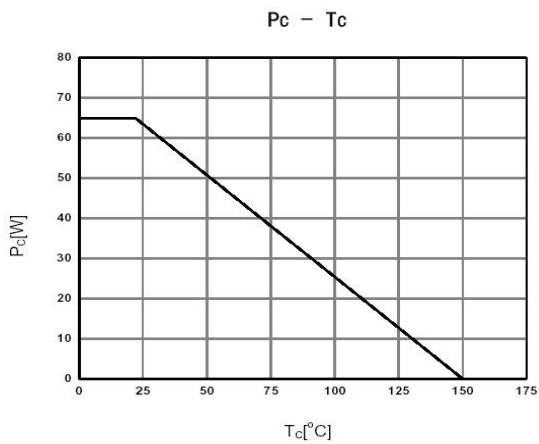
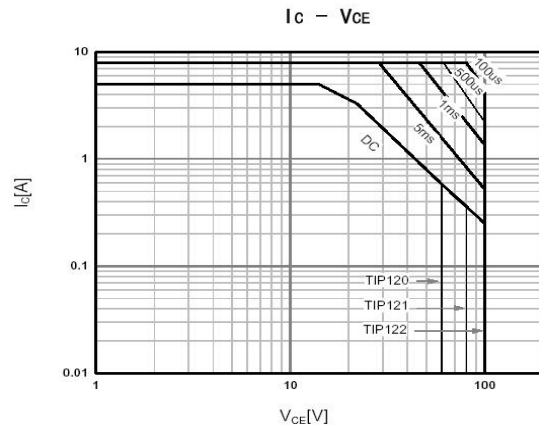
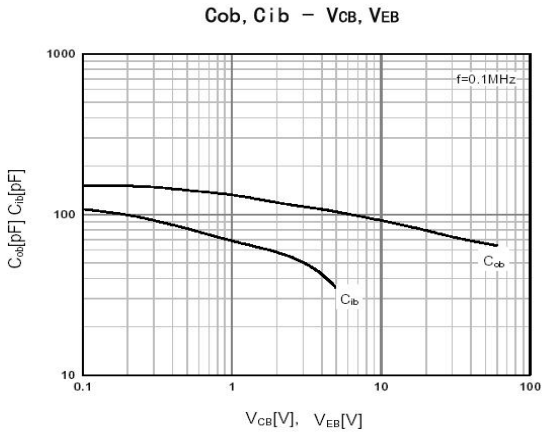
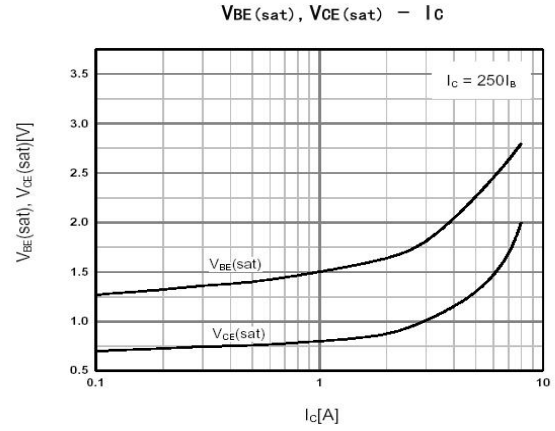
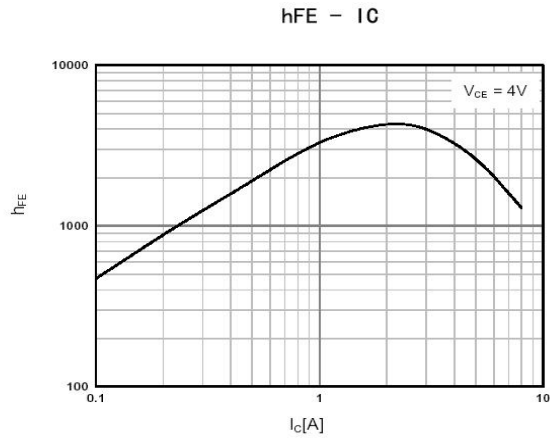
Absolute Maximum Ratings(Ta=25°C)

Parameter	Symbol	Rating	Unit
Collector to Base Voltage	V_{CBO}	100	V
Collector to Emitter Voltage	V_{CEO}	100	V
Emitter to Base Voltage	V_{EBO}	5.0	V
Collector Current - Continuous	I_C	5.0	A
Peak Collector Current	I_{CP}	8.0	A
Base Current - Continuous	I_B	120	mA
Collector Power Dissipation	P_C	2.0	W
Collector Power Dissipation	$P_C(T_C=25^\circ\text{C})$	65	W
Junction Temperature	T_j	150	°C
Storage Temperature Range	T_{stg}	-55~150	°C

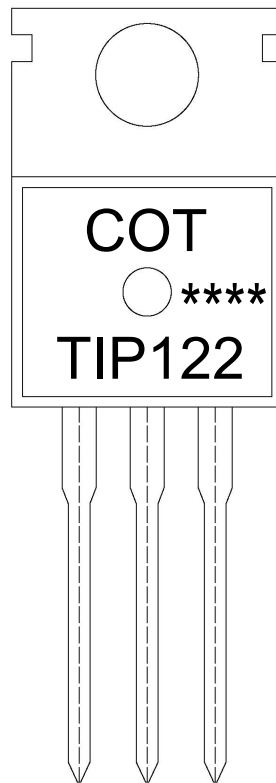
Electrical Characteristics(Ta=25°C)

Parameter	Symbol	Test Conditions	Min	Typ	Max	Unit
Collector to Emitter Breakdown Voltage	V_{CEO}	$I_C=100\text{mA}$ $I_B=0$	100			V
Collector Cut-Off Current	I_{CEO}	$V_{CE}=50\text{V}$ $I_B=0$			0.5	mA
Collector Cut-Off Current	I_{CBO}	$V_{CB}=100\text{V}$ $I_E=0$			0.2	mA
Emitter Cut-Off Current	I_{EBO}	$V_{EB}=5.0\text{V}$ $I_C=0$			2.0	mA
DC Current Gain	$h_{FE(1)}$	$V_{CE}=3.0\text{V}$ $I_C=0.5\text{A}$	1000			
	$h_{FE(2)}$	$V_{CE}=3.0\text{V}$ $I_C=3.0\text{A}$	1000			
Collector to Emitter Saturation Voltage	$V_{CE(sat)(1)}$	$I_C=3.0\text{A}$ $I_B=12\text{mA}$			2.0	V
	$V_{CE(sat)(2)}$	$I_C=5.0\text{A}$ $I_B=20\text{mA}$			4.0	V
Base to Emitter Voltage	V_{BE}	$I_C=3.0\text{A}$ $V_{CE}=3.0\text{V}$			2.5	V
Collector output capacitance	C_{ob}	$V_{CB}=10\text{V}$ $I_E=0$ $f=0.1\text{MHz}$			200	pF

Electrical Characteristic Curve



Marking Instructions



Note:
 COT: Company Code
 TIP122: Product Type.
 ****: Lot No. Code, code change with Lot No

Packaging SPEC.

BULK

Package Type	Units					Dimension (unit: mm ³)		
	Units/Bag	Bags/Inner Box	Units/Inner Box	Inner Boxes/Outer Box	Units/Outer Box	Bag	Inner Box	Outer Box
TO-220/F	200	10	2,000	5	10,000	135×190	237×172×102	560×245×195

TUBE

Package Type	Units					Dimension (unit: mm ³)		
	Units/Tube	Tubes/Inner Box	Units/Inner Box	Inner Boxes/Outer Box	Units/Outer Box	Tube	Inner Box	Outer Box
TO-220/F	50	20	1,000	5	5,000	532×31.4×5.5	555×164×50	575×290×180

Package Outline Dimensions

T0-220

单位: mm

