

Description

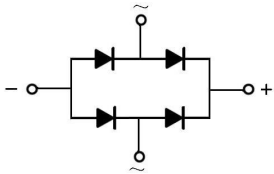
0.8A Surface Mount Glass Passivated Bridge Rectifier, MBF thin package

Applications

- General purpose

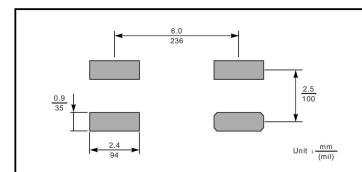
Features

- Glass Passivated Chip Junction
- Reverse Voltage:100to1000V
- Forward Current:0.8 A
- High Surge Current Capability
- Designed for Surface Mount Application
- Halogen free product.

Equivalent Circuit

Pinning


PIN	DESCRIPTION
1	Input Pin (-)
2	Input Pin (-)
3	Output Anode (+)
4	Output Cathode (-)

The recommended mounting pad size


Marking

See Marking Instructions.

Absolute Maximum Ratings(Ta=25°C)

Parameter	Symbol	Rating						Unit
		MB1F	MB2F	MB4F	MB6F	MB8F	MB10F	
Maximum Recurrent Peak Reverse Voltage	V_{RRM}	100	200	400	600	800	1000	V
Maximum RMS Voltage	V_{RMS}	70	140	280	420	560	700	V
Maximum DC Blocking Voltage	V_{DC}	100	200	400	600	800	1000	V
Average Rectified Output Current at Ta = 50°C	$I_{F(AV)}$	0.8						A
Peak Forward Surge Current, 8.3ms Single Half Sine-wave Superimposed on Rated Load (JEDEC method)	I_{FSM}	30						A
Typical Junction Capacitance ¹⁾	C_j	13						pF
Typical Thermal Resistance ²⁾	$R_{\theta JA}$	95						°C/W
	$R_{\theta JL}$	30						
Operating and Storage Temperature Range	T_j, T_{stg}	-55~+150						°C

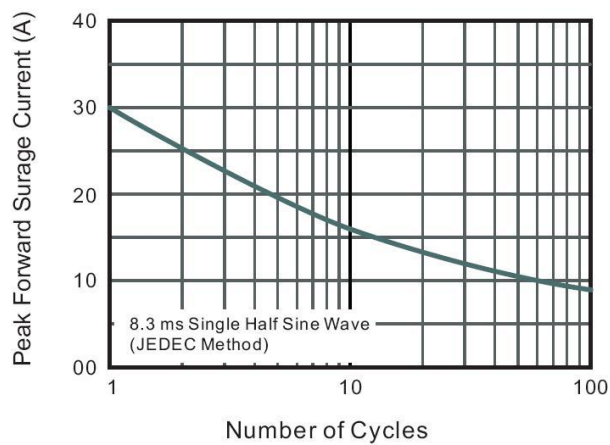
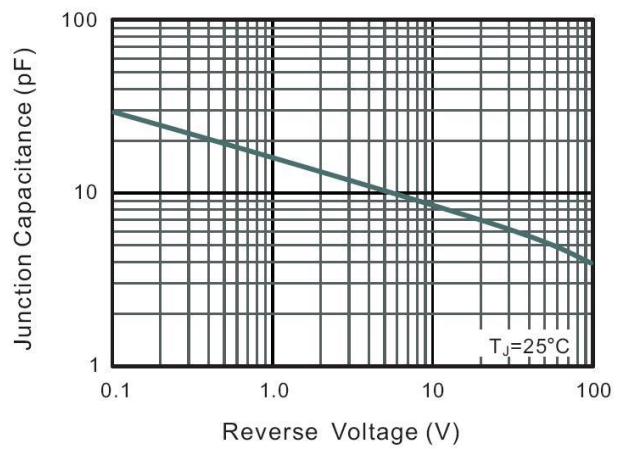
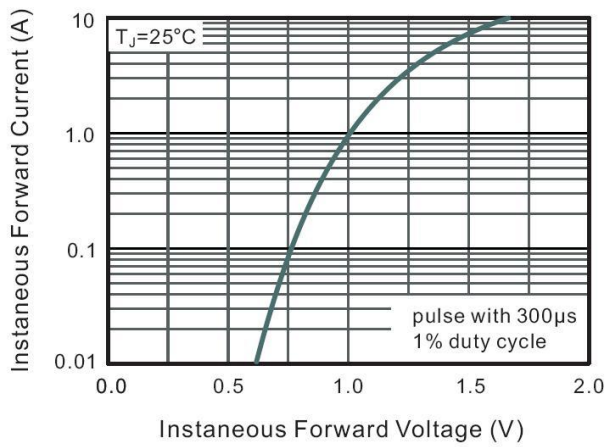
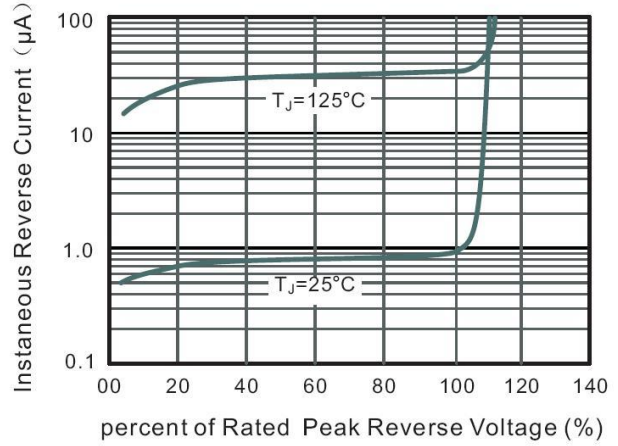
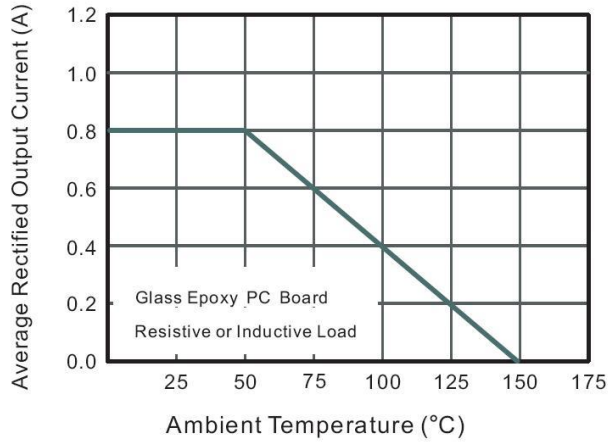
Note:

1. Measured at 1MHz and applied reverse voltage of 4 V D.C.
2. Mounted on glass epoxy PC board with 4×(5×5mm²) copper pad.

Electrical Characteristics(Ta=25°C)

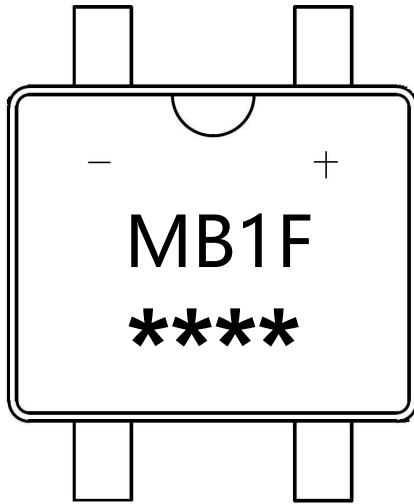
Parameter	Symbol	Test Conditions	Rating	Unit
Max Instantaneous Forward Voltage	V_F	$I_F=0.8A$	1.1	V
Maximum DC Reverse Current at Maximum DC Blocking Voltage	I_R	$T_a=25^\circ C$	5.0	μA
		$T_a=125^\circ C$	40	μA

Electrical Characteristic Curve



Marking Instructions

Marking



Type number	Marking code
MB1F	MB1F
MB2F	MB2F
MB4F	MB4F
MB6F	MB6F
MB8F	MB8F
MB10F	MB10F

Note:

MB1F: Product Type Code

****: Lot No. Code, The 1st * means:YM Code,
The last 3 * means:little Lot No Code

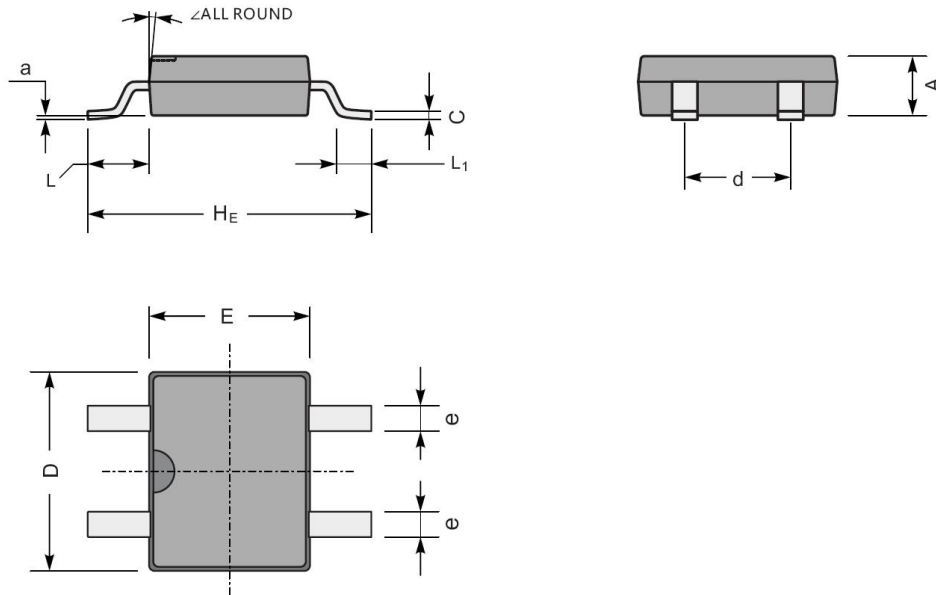
Packaging SPEC.

REEL

Package Type	Units					Dimension (unit: mm ³)		
	Units/Reel	Reels/Inner Box	Units/Inner Box	Inner Boxes/Outer Box	Units/Outer Box	Reel	Inner Box	Outer Box
MBF	5000	2	10000	7	70000	13" ×12	336X336X40	380X335X366

Package Outline Dimensions

MBF



MBF mechanical data

UNIT		A	C	D	E	H _E	d	e	L	L ₁	a	∠
mm	max	1.6	0.22	5.0	4.1	7.0	2.7	0.8	1.7	1.1	0.2	7°
	min	1.2	0.15	4.5	3.6	6.4	2.3	0.5	1.3	0.5	—	
mil	max	63	8.7	197	161	276	106	31	67	43	8	
	min	47	5.9	177	142	252	91	20	51	20	—	